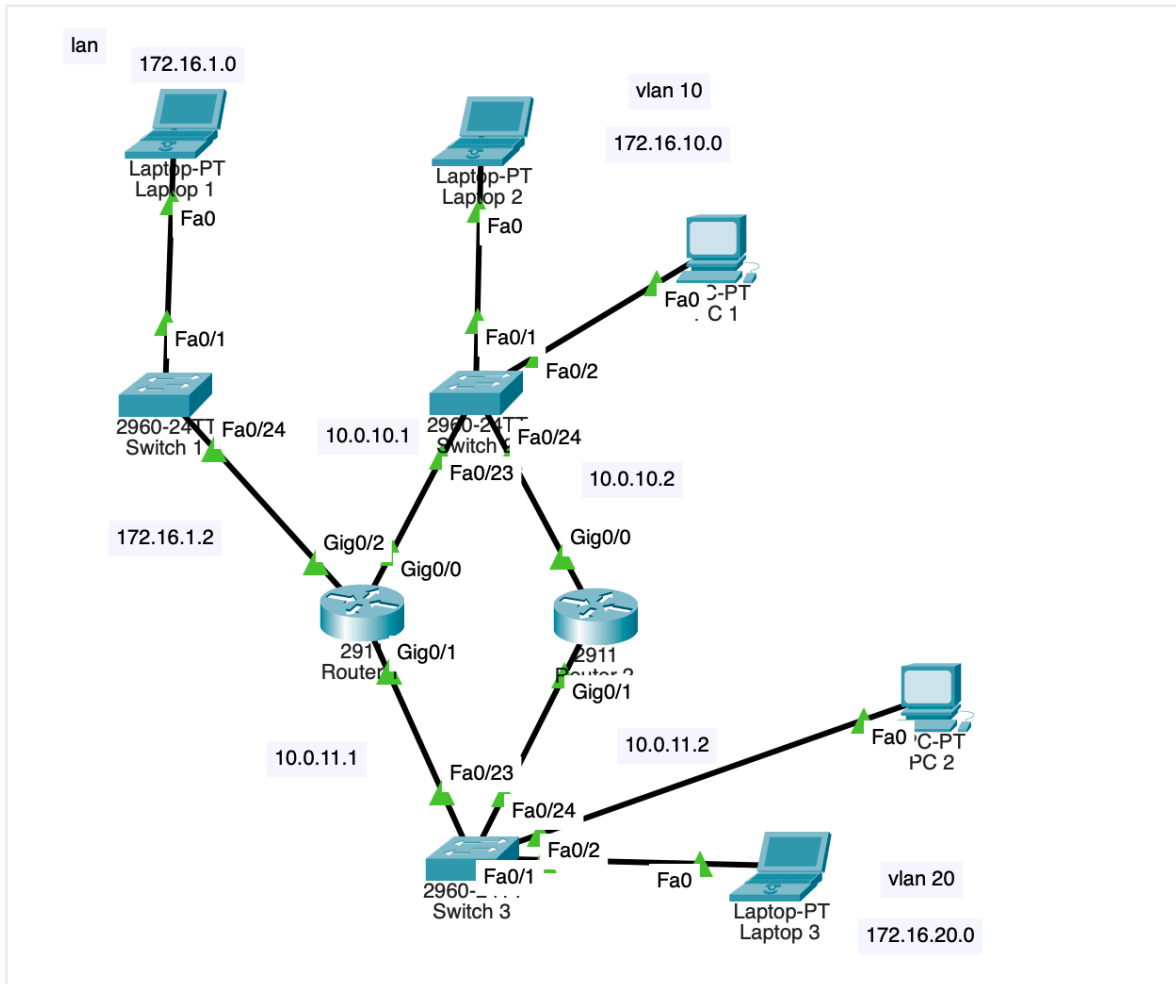


TP 6 Tutoré

Rodriguez 17/09

il faut que j'essaye de mettre HSRP et DHCP sur les routeurs



Switch 1

```
en  
conf t
```

```
int r fa0/1  
sw mode access  
ex
```

```
ex
```

```
wr
```

Switch 2

```
en  
conf t
```

```
Vlan 10  
Ex
```

```
int r fa0/1-2  
sw mode access  
sw access vlan 10  
ex
```

```
int r fa0/23-24  
sw m a  
sw m trunk  
ex  
ex
```

```
wr
```

Switch 3

```
en  
conf t
```

```
Vlan 20  
Ex
```

```
int r fa0/1-2  
sw mode access  
sw access vlan 20  
ex
```

```
int r fa0/23-24  
sw m a  
sw m trunk  
ex  
ex
```

```
wr
```

Routeur 1

```
en
```

conf t

Host R1

```
interface g0/2
ip address 172.16.1.2 255.255.255.0
no shutdown
ex
```

```
interface g0/0
ip address 10.0.10.1 255.255.255.0
```

```
Standby 1 ip 10.0.10.254
Standby priority 101
Standby 1 preempt
```

```
no shutdown
ex
```

```
interface g0/1
ip address 10.0.11.1 255.255.255.0
```

```
Standby 2 ip 10.0.11.254
Standby priority 101
Standby 2 preempt
```

```
no shutdown
ex
```

```
Router ospf 1
Netw 172.16.10.0 0.255.255.255 area 0
Netw 172.16.20.0 0.255.255.255 area 0
Netw 172.16.1.0 0.255.255.255 area 0
Netw 10.0.10.1 255.255.255.0 area 0
netw 10.0.10.1 255.255.255.0 area 0
ex
```

```
ex
wr
```

Routeur 2

```
en
conf t
```

Host R2

```
interface g0/0
ip address 10.0.10.2 255.255.255.0
```

```
Standby 1 ip 10.0.10.254
Standby priority 102
Standby 1 preempt
```

```
no shutdown
ex
```

```
interface g0/1
ip address 10.0.11.2 255.255.255.0
```

```
Standby 2 ip 10.0.11.254
Standby priority 102
Standby 2 preempt
```

```
no shutdown
ex
```

```
interface gig0/0.10
encapsulation dot1Q 10
ip address 172.16.10.254 255.255.255.0
no sh
ex
```

```
interface gig0/1.20
encapsulation dot1Q 20
ip address 172.16.20.254 255.255.255.0
no sh
ex
```

```
Ip DHCP excluded-add 172.16.10.254
Ip DHCP excluded-add 172.16.20.254
```

```
Ip dhcp pool lan10
Netw 172.16.10.0 255.255.255.0
Default-router 172.16.10.254
```

```
Ip DHCP pool lan20
Netw 172.16.20.0 255.255.255.0
Default-router 172.16.20.254
ex
```

```
Router ospf 1
```

```
Netw 172.16.10.0 0.255.255.255 area 0
Netw 172.16.20.0 0.255.255.255 area 0
Netw 172.16.1.0 0.255.255.255 area 0
Netw 10.0.10.1 255.255.255.0 area 0
netw 10.0.10.1 255.255.255.0 area 0
ex
```

```
ex
wr
```